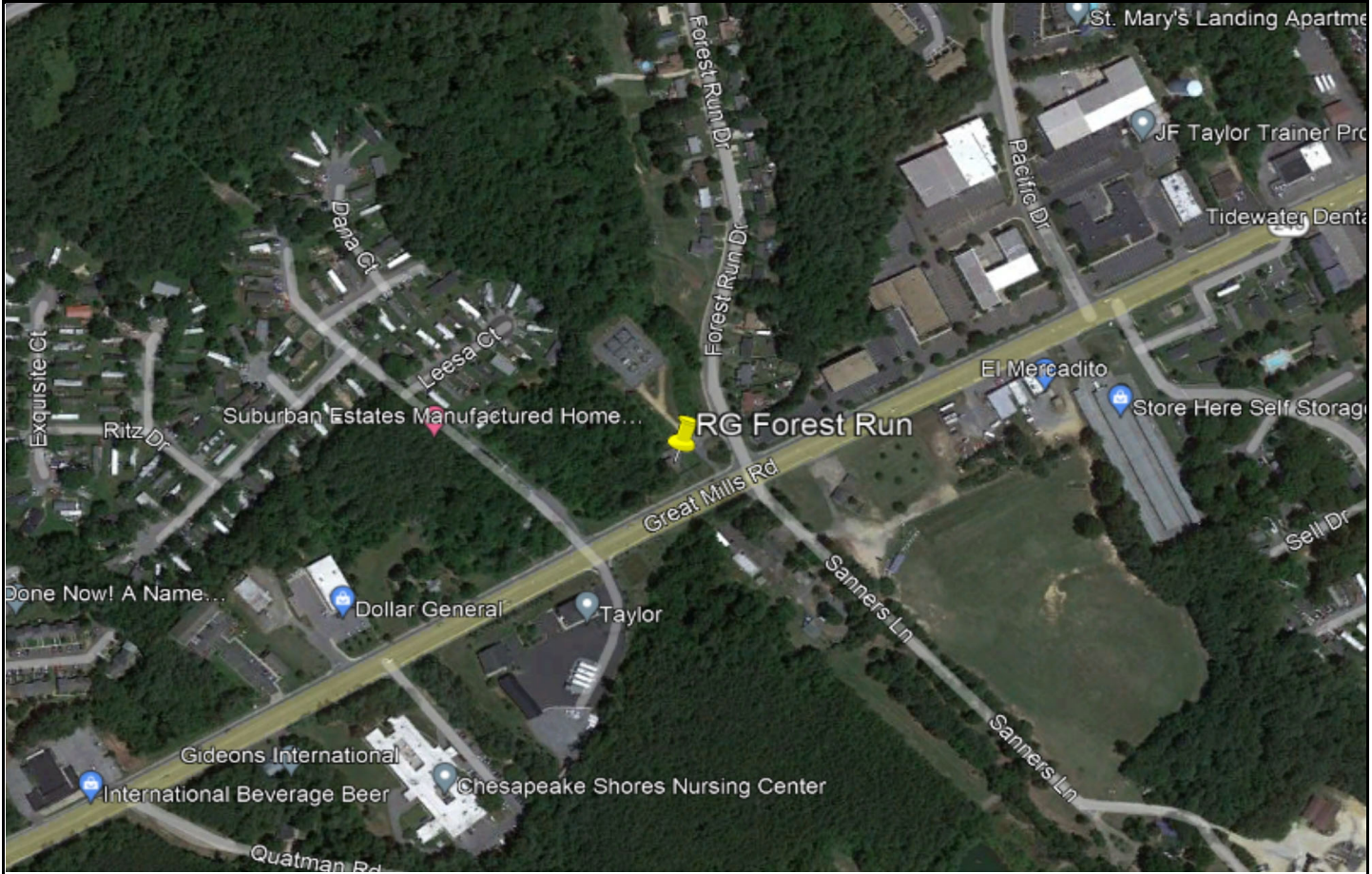




## RAIN GAUGE SITE INFORMATION FIELD LOG

<b>PROJECT:</b> St. Mary's County, MD	<b>DATE:</b> September 20, 2023	<b>JOB#:</b> 23079
<b>LOCATION:</b> 21451 Great Mills Road (Forest Run Pump Station)		
<b>COMMENTS:</b> 38.256951, -76.475475		

### LOCATION







## RAIN GAUGE SITE INFORMATION FIELD LOG

<b>PROJECT:</b> St. Mary's County, MD	<b>DATE:</b> September 19, 2023	<b>JOB#:</b> 23079
<b>LOCATION:</b> 16668 Piney Point Road		
<b>COMMENTS:</b> 38.125443, -76.489427		

### LOCATION

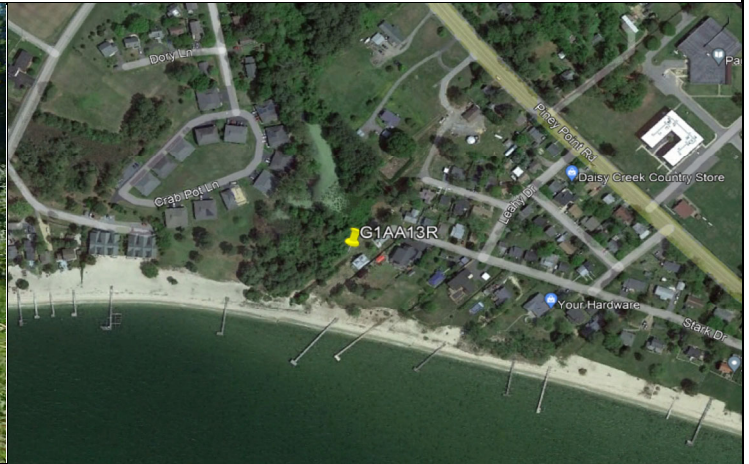




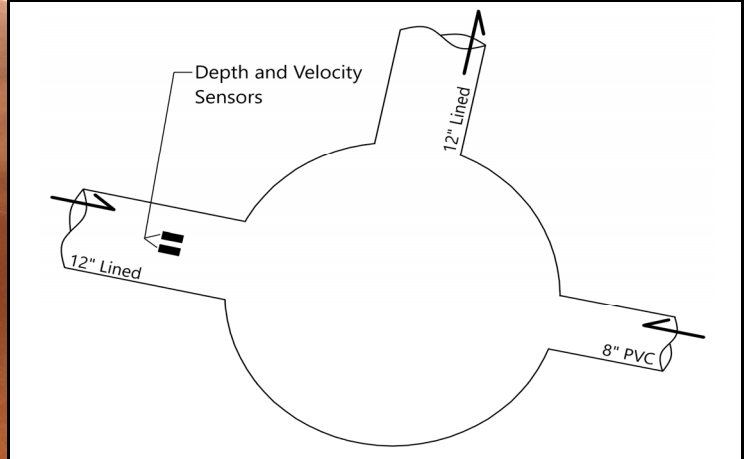


## METER SITE INFORMATION FIELD LOG

<b>PROJECT:</b> St. Mary's County, MD	<b>DATE:</b> September 19, 2023	<b>JOB#:</b> 23079
<b>LOCATION:</b> 45277 Stark Drive	<b>MH#:</b> G1AA13R	<b>METER SITE:</b> G1AA13R
<b>GPS/COMMENTS:</b> 38.141859, -76.510801		

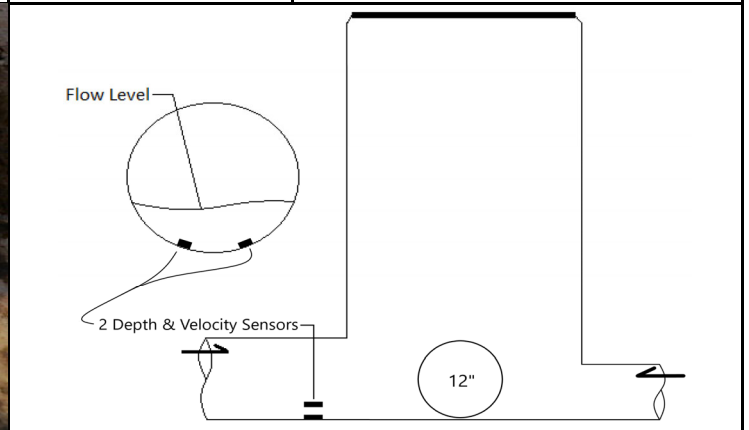


	Size (")	Material	Flow Depth (")	Debris	Shape	MH Depth
Incoming	12	Lined	2	0	Circular	07' 02"
Incoming	8	PVC	0	0	Circular	07' 02"
Incoming						
Outgoing	12	Lined	2	0	Circular	07' 03"



### SURCHARGE INFORMATION

<b>SURCHARGE NONE EVIDENT:</b> X	<b>LENGTH:</b>	<b>HEIGHT ABOVE WEIR:</b>
<b>SURCHARGED MARKS TO:</b>	<b>BREADTH:</b>	<b>OVERFLOW OCCURS AT:</b>
<b>SURCHARGE CURRENTLY TO:</b>	<b>LEVEL:</b>	





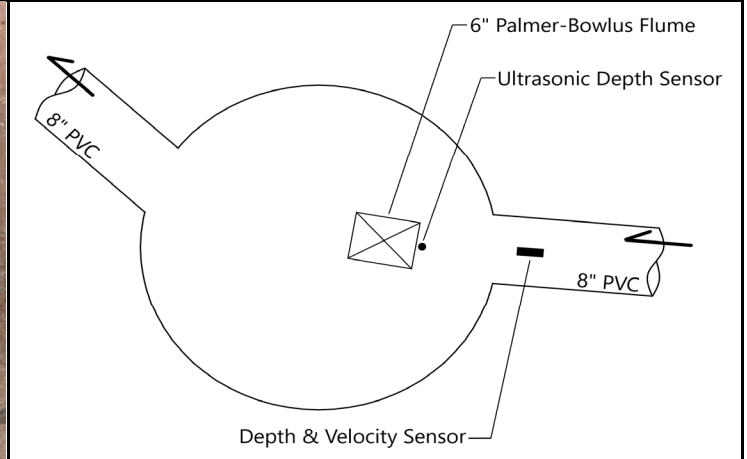


## METER SITE INFORMATION FIELD LOG

<b>PROJECT:</b> St. Mary's County, MD	<b>DATE:</b> September 19, 2023	<b>JOB#:</b> 23079
<b>LOCATION:</b> 45283 Bloch Street	<b>MH#:</b> G1AA13U	<b>METER SITE:</b> G1AA13U
<b>GPS/COMMENTS:</b> 38.142453, -76.510161		

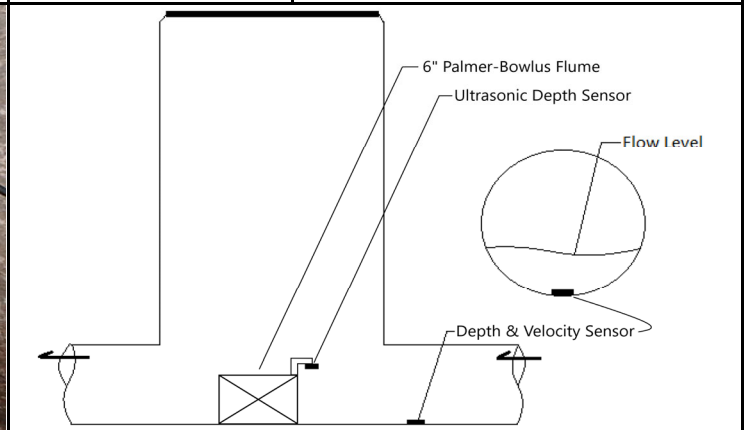


	Size (")	Material	Flow Depth (")	Debris	Shape	MH Depth
Incoming	8	PVC	0.25	0	Circular	07' 06"
Incoming						
Incoming						
Outgoing	8	PVC	0.25	0	Circular	07' 07"



### SURCHARGE INFORMATION

<b>SURCHARGE NONE EVIDENT:</b> X	<b>LENGTH:</b>	<b>HEIGHT ABOVE WEIR:</b>
<b>SURCHARGED MARKS TO:</b>	<b>BREADTH:</b>	<b>OVERFLOW OCCURS AT:</b>
<b>SURCHARGE CURRENTLY TO:</b>	<b>LEVEL:</b>	





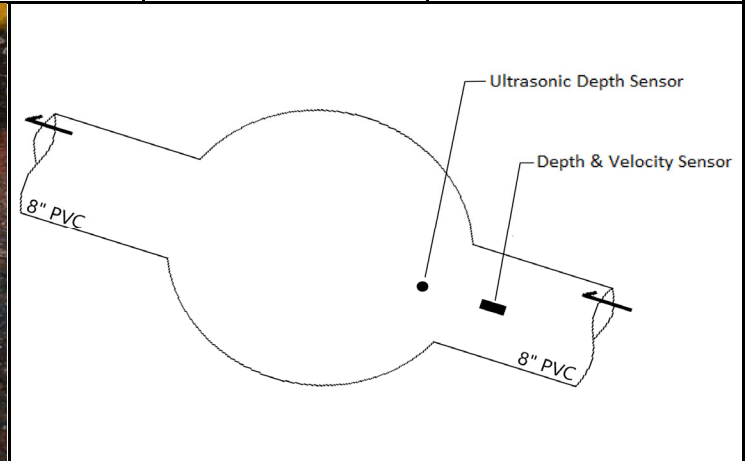


## METER SITE INFORMATION FIELD LOG

<b>PROJECT:</b> St. Mary's County, MD	<b>DATE:</b> September 19, 2023	<b>JOB#:</b> 23079
<b>LOCATION:</b> 45326 Stark Drive	<b>MH#:</b> G1AA18H	<b>METER SITE:</b> G1AA18H
<b>GPS/COMMENTS:</b> 38.141746, -76.508943		

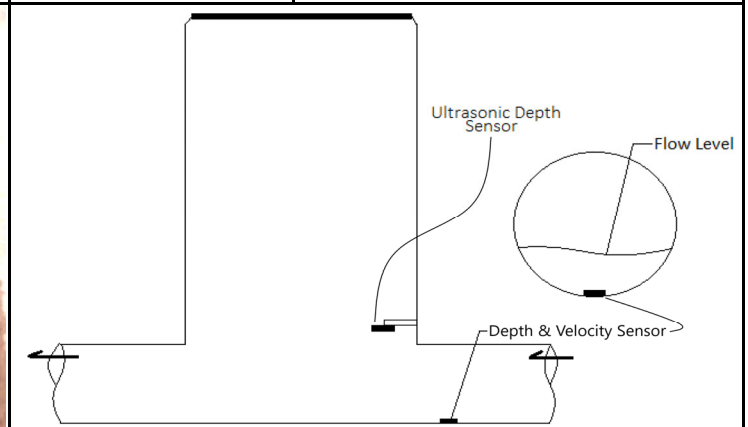


	Size (")	Material	Flow Depth (")	Debris	Shape	MH Depth
Incoming	8	PVC	2	0	Circular	09' 08"
Incoming						
Incoming						
Outgoing	8	PVC	2	0	Circular	09' 09"



### SURCHARGE INFORMATION

<b>SURCHARGE NONE EVIDENT:</b> X	<b>LENGTH:</b>	<b>HEIGHT ABOVE WEIR:</b>
<b>SURCHARGED MARKS TO:</b>	<b>BREADTH:</b>	<b>OVERFLOW OCCURS AT:</b>
<b>SURCHARGE CURRENTLY TO:</b>	<b>LEVEL:</b>	

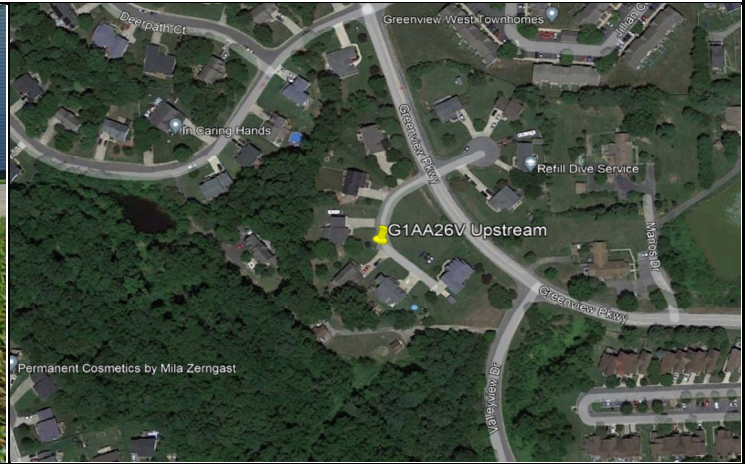




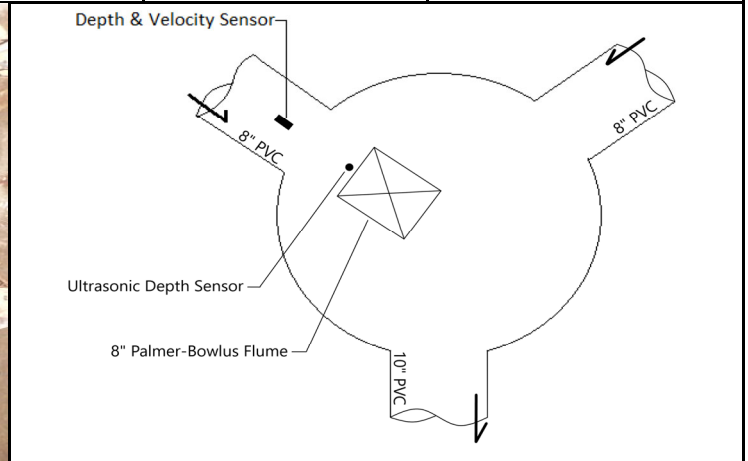


## METER SITE INFORMATION FIELD LOG

<b>PROJECT:</b> St. Mary's County, MD	<b>DATE:</b> September 20, 2023	<b>JOB#:</b> 23079
<b>LOCATION:</b> 45530 Woodcroft Way	<b>MH#:</b> Unknown	<b>METER SITE:</b> G1AA26V Upstream
<b>GPS/COMMENTS:</b> 38.281126, -76.499630		



	Size (")	Material	Flow Depth (")	Debris	Shape	MH Depth
Incoming	8	PVC	1	0	Circular	10' 05"
Incoming	8	PVC	0.25	0	Circular	13' 03"
Incoming						
Outgoing	10	PVC	1	0	Circular	13' 03"

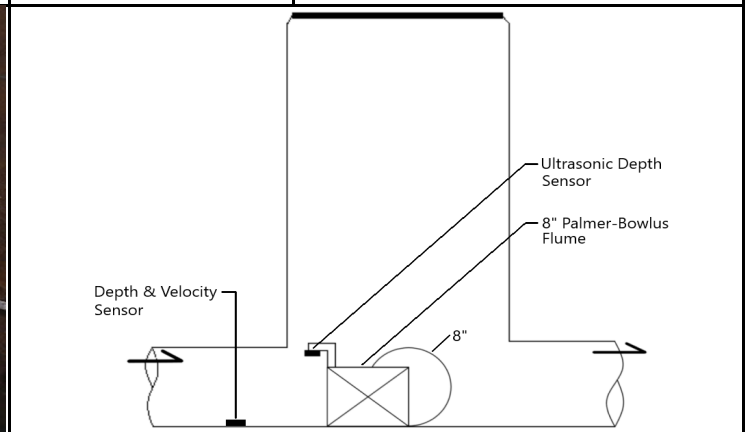


### SURCHARGE INFORMATION

<b>SURCHARGE NONE EVIDENT:</b> X
<b>SURCHARGED MARKS TO:</b>
<b>SURCHARGE CURRENTLY TO:</b>

### WEIR INFORMATION

<b>LENGTH:</b>	<b>HEIGHT ABOVE WEIR:</b>
<b>BREADTH:</b>	<b>OVERFLOW OCCURS AT:</b>
<b>LEVEL:</b>	

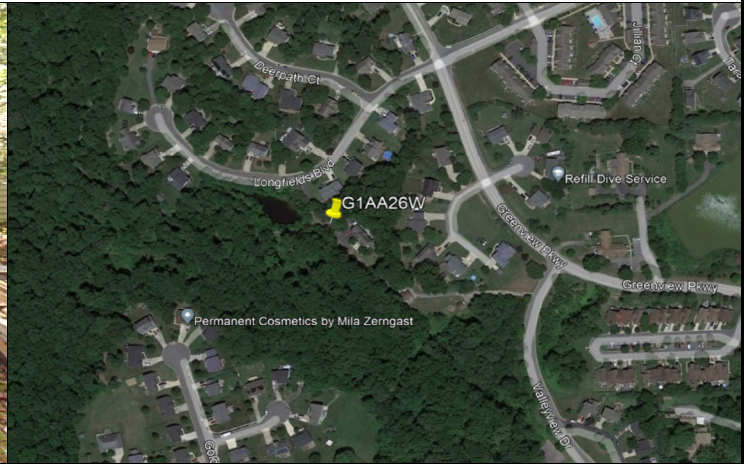




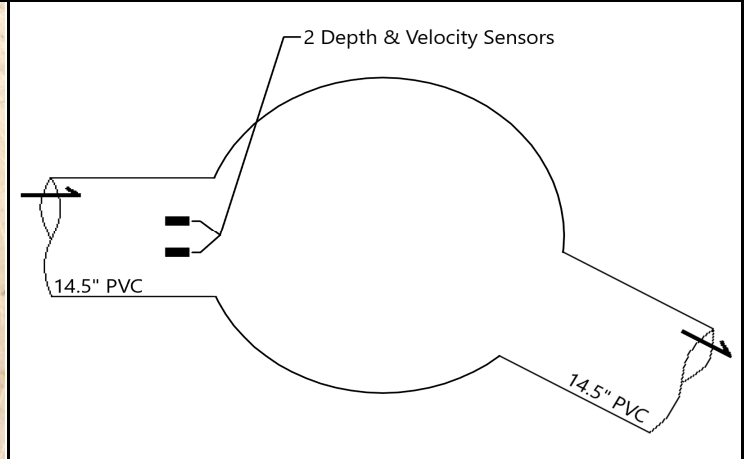


## METER SITE INFORMATION FIELD LOG

<b>PROJECT:</b> St. Mary's County, MD	<b>DATE:</b> September 21, 2023	<b>JOB#:</b> 23079
<b>LOCATION:</b> 45547 Longfield Boulevard	<b>MH#:</b> G1AA26W	<b>METER SITE:</b> G1AA26W
<b>GPS/COMMENTS:</b> 38.281224, -76.500785		



	Size (")	Material	Flow Depth (")	Debris	Shape	MH Depth
Incoming	14.5	PVC	2	0	Circular	20' 09"
Incoming						
Incoming						
Outgoing	14.5	PVC	2	0	Circular	20' 10"

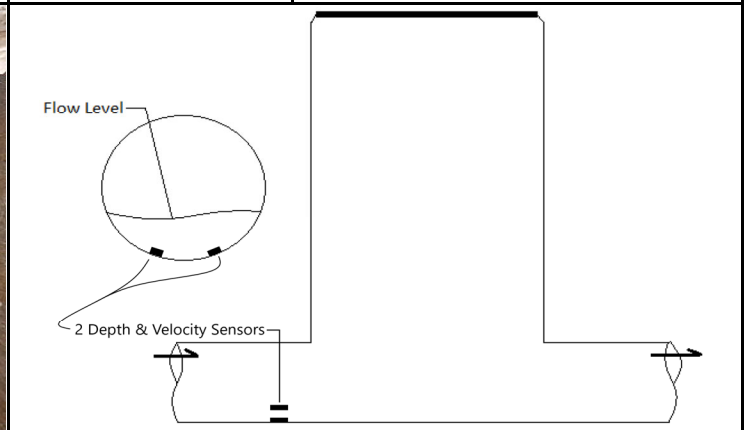


### SURCHARGE INFORMATION

<b>SURCHARGE NONE EVIDENT:</b> X
<b>SURCHARGED MARKS TO:</b>
<b>SURCHARGE CURRENTLY TO:</b>

### WEIR INFORMATION

<b>LENGTH:</b>	<b>HEIGHT ABOVE WEIR:</b>
<b>BREADTH:</b>	<b>OVERFLOW OCCURS AT:</b>
<b>LEVEL:</b>	

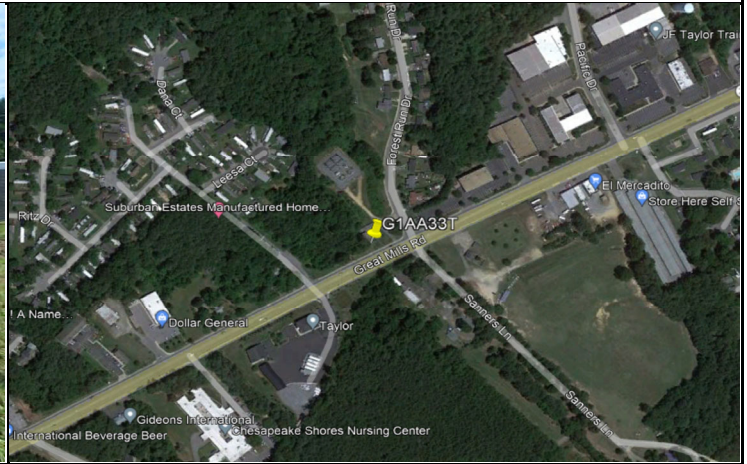




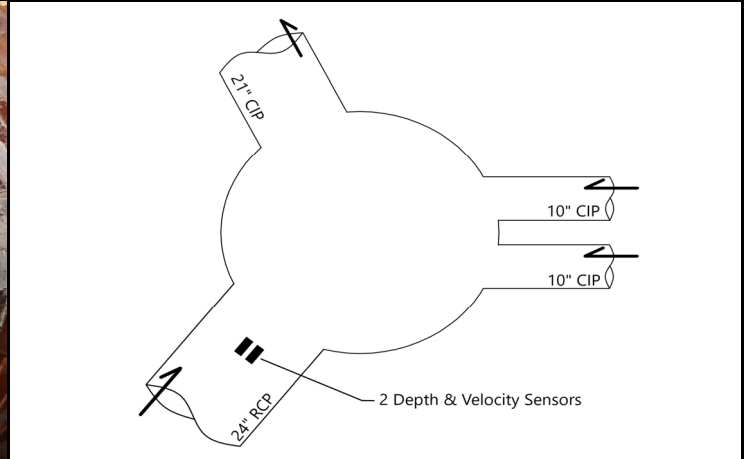


## METER SITE INFORMATION FIELD LOG

<b>PROJECT:</b> St. Mary's County, MD	<b>DATE:</b> September 20, 2023	<b>JOB#:</b> 23079
<b>LOCATION:</b> 21451 Great Mills Road	<b>MH#:</b> G1AA33T	<b>METER SITE:</b> G1AA33T
<b>GPS/COMMENTS:</b> 38.256847, -76.475435		

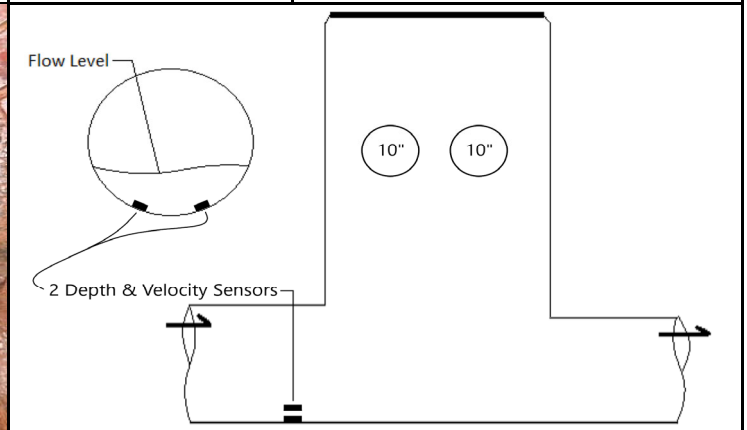


	Size (")	Material	Flow Depth (")	Debris	Shape	MH Depth
Incoming	24	RCP	7	0	Circular	07' 11"
Incoming	10	CIP	0	0	Circular	03' 01"
Incoming	10	CIP	0	0	Circular	03' 01"
Outgoing	21	CIP	7	0	Circular	08' 00"



### SURCHARGE INFORMATION

<b>SURCHARGE NONE EVIDENT:</b>	<b>LENGTH:</b>	<b>HEIGHT ABOVE WEIR:</b>
<b>SURCHARGED MARKS TO: 8"</b>	<b>BREADTH:</b>	<b>OVERFLOW OCCURS AT:</b>
<b>SURCHARGE CURRENTLY TO:</b>	<b>LEVEL:</b>	





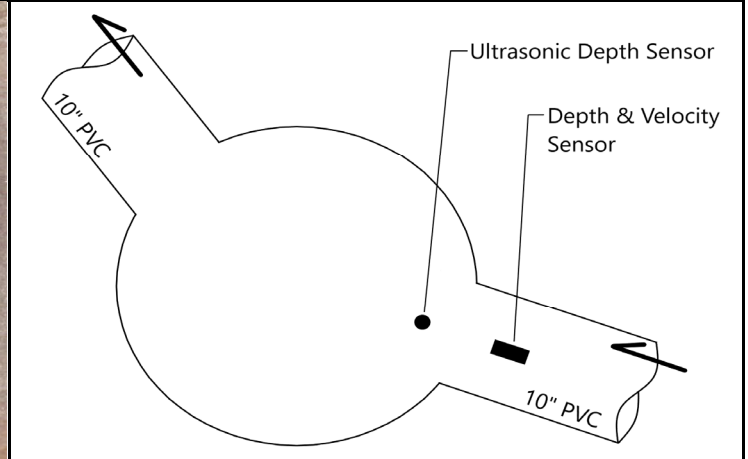


## METER SITE INFORMATION FIELD LOG

<b>PROJECT:</b> St. Mary's County, MD	<b>DATE:</b> September 21, 2023	<b>JOB#:</b> 23079
<b>LOCATION:</b> R.O.W. off Valleyview Drive	<b>MH#:</b> G1AA75C	<b>METER SITE:</b> G1AA75C
<b>GPS/COMMENTS:</b> 38.279834, -76.499408		



	Size (")	Material	Flow Depth (")	Debris	Shape	MH Depth
Incoming	10	PVC	1.5	0	Circular	07' 11"
Incoming						
Incoming						
Outgoing	10	PVC	1.5	0	Circular	08' 00"

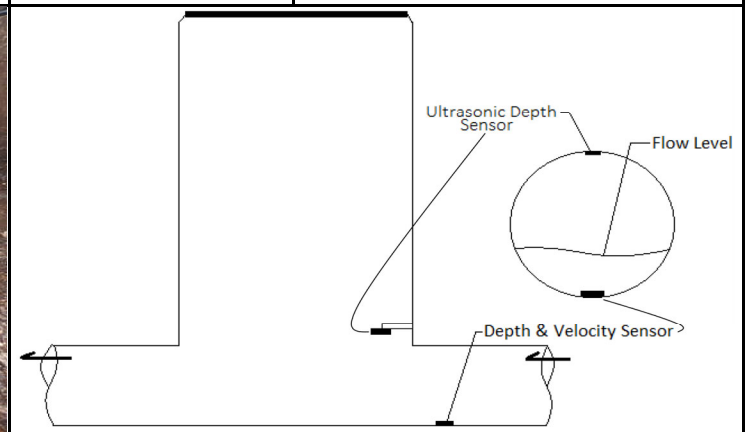


### SURCHARGE INFORMATION

**SURCHARGE NONE EVIDENT:** X  
**SURCHARGED MARKS TO:**  
**SURCHARGE CURRENTLY TO:**

### WEIR INFORMATION

**LENGTH:**  
**BREADTH:**  
**LEVEL:**  
**HEIGHT ABOVE WEIR:**  
**OVERFLOW OCCURS AT:**





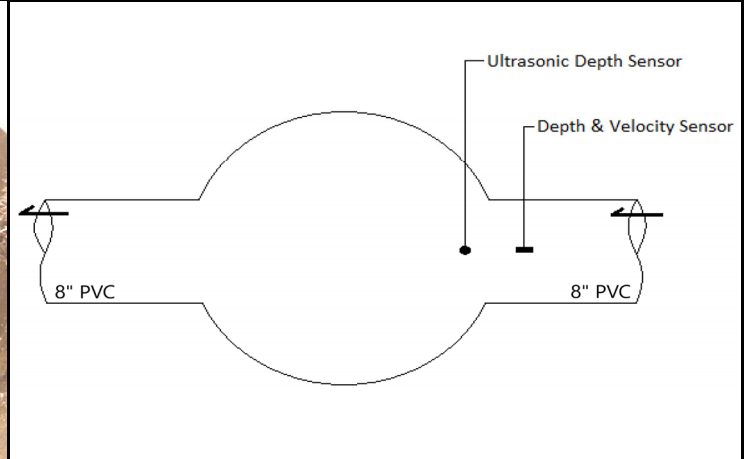


## METER SITE INFORMATION FIELD LOG

<b>PROJECT:</b> St. Mary's County, MD	<b>DATE:</b> September 20, 2023	<b>JOB#:</b> 23079
<b>LOCATION:</b> 21508 Forest Run Drive	<b>MH#:</b> G1AA96L	<b>METER SITE:</b> G1AA96L
<b>GPS/COMMENTS:</b> 38.258241, -76.474968		



	Size (")	Material	Flow Depth (")	Debris	Shape	MH Depth
Incoming	8	PVC	2.5	0	Circular	07' 06"
Incoming						
Incoming						
Outgoing	8	PVC	2.5	0	Circular	07' 07"



### SURCHARGE INFORMATION

<b>SURCHARGE NONE EVIDENT:</b>
<b>SURCHARGED MARKS TO:</b> 1'
<b>SURCHARGE CURRENTLY TO:</b> NA

### WEIR INFORMATION

<b>LENGTH:</b>	<b>HEIGHT ABOVE WEIR:</b>
<b>BREADTH:</b>	<b>OVERFLOW OCCURS AT:</b>
<b>LEVEL:</b>	

